

MILL BRAE PROVEN FAMILIES

63 MB Prec 1680 Queen 638

Cow • Calved: 10-18-95 • Tattoo: 638 • Reg. No.: 12559943
 Tehama Bando 155
 G A R Precision 1680
 9J9 G A R 856

Rito OG8 of 2036 Rito 8E8
 MB OG8 Queen 3529
 LB Queen By Paragon 839

BW	WW	MILK	YW	SC
+5.3	.73	+33	.66	+18 .62
+67	.65	-47	.28	

A young cow by the Pathfinder Sire GAR Precision 1680 who excels in combining carcass quality and performance.

This female records a progeny weaning ratio of 103 on three calves with a daughter selling as Lot 64.

Sells with a bull calf at side (Lot 63A) calved September 19, 2000 by SITZ ALLIANCE 6595. Tattoo 036. Birth weight 86 lbs.

CARCASS
CAR WT
+18 .26
MARB
+16 .27
RIBEYE
+33 .25
FAT
+00 .25
%RP
+1 .25



LB ENCHANTRESS EXT 546 - This female bred at Mill Brae Ranch was the Supreme Champion of the 1997 Kansas Angus Futurity.

64 Mill Brae PT Queen 820

Cow • Calved: 9-21-98 • Tattoo: 820 • Reg. No.: 13315890
 R R Traveler 5204
 Gardens Prime Time
 Green Garden Susie 1246 S1

Q A S Traveler 23-4
 Eriskay of Rollin Rock 3302
 Gardens Transition 7205 S1
 Green Garden Susie 9118 S2

BW	WW	MILK	YW	SC
+4.1	.38	+30	.38	+21 .32
+68	.32	+25	.31	

A two-year-old female backed by the proven marbling and moderate birth weight genetics of Gardens Prime Time and GAR Precision 1680.

This female earned an individual weaning ratio of 102 in the Mill Brae performance program from a dam who records a progeny weaning ratio of 103 on three calves and sells as Lot 63.

Sells with a heifer calf at side (Lot 64A) calved September 15, 2000 by SITZ ALLIANCE 6595. Tattoo 024. Birth weight 62 lbs.

CARCASS
CAR WT
+5 .29
MARB
+31 .29
RIBEYE
+14 .28
FAT
+03 .28
%RP
-.2 .28

67 Mill Brae EXT Gammer 725

Cow • Calved: 9-28-97 • Tattoo: 725 • Reg. No.: 13065508
 Emulation 31
 Emulation N Bar 5522
 N Bar Emulation EXT
 N Bar Primrose 2424

Q A S Traveler 23-4
 LB Gammer Trav 144
 LB Gammer HP 906

Ankony 8F78 Lass 8F275
 Emulation 31
 Primrose N Bar 9962
 Band 234 of Ideal 3163
 QAS Blackbird Eve 601 1
 P S High Pockets
 LB Gammer BO 6172

BW	WW	MILK	YW	SC
+2.5	.68	+38	.64	+20 .63
+70	.63	-23	.31	

A full sister to a \$3,000 bull selected by Mike McClellan of Palco, Kansas in the 1997 Mill Brae Sale.

This daughter of the Pathfinder Sire N Bar Emulation EXT combines a progeny birth ratio of 98 with a progeny weaning ratio of 101 on her first calf from a dam who records progeny weaning and yearling ratios of 107 and 106 respectively on four calves. **Sells with a heifer calf at side (Lot 67A) calved September 18, 2000 by ALBERDA TRAVELER 416. Tattoo 030. Birth weight 72 lbs.**

CARCASS
CAR WT
+13 .31
MARB
+10 .31
RIBEYE
+12 .31
FAT
+02 .31
%RP
-.2 .31

65 MB 6807 Gammer 3647

Cow • Calved: 2-27-93 • Tattoo: 3647 • Reg. No.: 11988016
 Q A S Traveler 23-4
 DHD Traveler 6807
 Bemindful Maid DHD 0807

Band 234 of Ideal 3163
 QAS Blackbird Eve 601 1
 PBC 707 1M F0203
 Bemindful Maid of RR 1079

Leachman Paragon
 LB PAR Gammer 0507
 LB Gammer JJ 4114

Brost Power Drive
 Leachman Queen 0589
 Briarhill JJ
 Tartans Gammer 3405

BW	WW	MILK	YW	SC
+1.9	.74	+31	.67	+14 .67
+60	.68	-16	.38	

An excellent producing daughter of the Pathfinder Sire DHD Traveler 6807 with a modest progeny birth ratio of 92 in combination with progeny weaning and yearling ratios of 102 and 103 respectively on four calves with a daughter in production selling as Lot 66 who weaned her first calf with a ratio of 103.

Two sons of this cow were selected by repeat buyer JM Swart of Seneca, Kansas for \$3,000 in the 1997 Mill Brae Sale and for \$2,600 in the 1998 Mill Brae Sale with another son selling for \$3,000 to Michaelis Ranch of Paxico, Kansas in the 2000 Mill Brae Sale.

Sells with a bull calf at side (Lot 65A) calved September 20, 2000 by VDAR LYCY'S BOY. Tattoo 041. Birth weight 78 lbs.

CARCASS
CAR WT
+8 .29
MARB
-.01 .29
RIBEYE
+18 .29
FAT
-.03 .29
%RP
+4 .29

68 Mill Brae EXT Gammer 8015

Cow • Calved: 2-4-98 • Tattoo: 8015 • Reg. No.: 13157491
 Emulation N Bar 5522
 N Bar Emulation EXT
 N Bar Primrose 2424

Emulation 31
 Ankony 8F78 Lass 8F275
 Emulation 31
 Primrose N Bar 9962

Rito 8E8 of 5H11 Traveler
 MB 8E8 Gammer 5029
 LB Gammer LBPD 8512

Q A S Traveler 23-4
 Rita 5H11 of 1B14 Rito 9J9
 Lynn Brae Pine Drive 889
 Lynn Brae Gammer 5172

BW	WW	MILK	YW	SC
+2.6	.37	+40	.38	+15 .38
+73	.28	-20	.31	

This daughter of the Pathfinder Sire N Bar Emulation EXT from the Gammer Family combines an individual birth ratio of 97 with an individual weaning ratio of 105 from a dam who records a progeny weaning ratio of 101 on three calves and a progeny yearling ratio of 104 on two heads.

A maternal sister weaned her first calf with a ratio of 103 and a maternal brother sold to Lee Kidd of Fredonia, Kansas in the 2000 Mill Brae Sale. **Sells with a heifer calf at side (Lot 68A) calved September 28, 2000 by ALBERDA TRAVELER 416. Tattoo 057. Birth weight 84 lbs.**

CARCASS
CAR WT
+14 .30
MARB
+08 .31
RIBEYE
+05 .31
FAT
+02 .30
%RP
-.3 .30

66 Mill Brae EXT Gammer 718

Cow • Calved: 9-21-97 • Tattoo: 718 • Reg. No.: 13065501
 Emulation N Bar 5522
 N Bar Emulation EXT
 N Bar Primrose 2424

Emulation 31
 Ankony 8F78 Lass 8F275
 Emulation 31
 Primrose N Bar 9962

DHD Traveler 6807
 MB 6807 Gammer 3647
 LB PAR Gammer 0507

Q A S Traveler 23-4
 Bemindful Maid DHD 0807
 Leachman Paragon
 LB Gammer JJ 4114

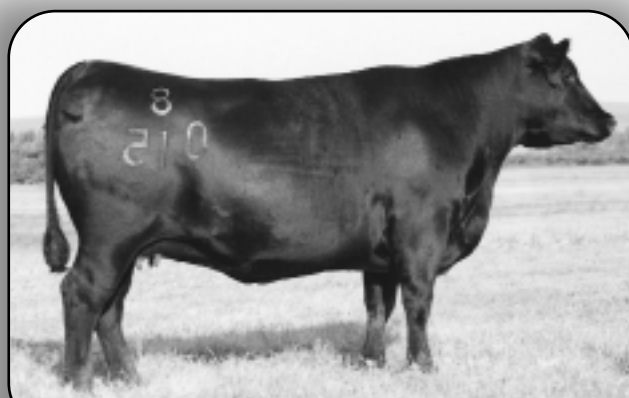
BW	WW	MILK	YW	SC
+1.7	.69	+39	.64	+18 .61
+74	.63	-33	.31	

A full sister to a \$3,000 bull in the 1997 Mill Brae Sale selected by JM Swart of Seneca, Kansas who also purchased a \$2,600 maternal brother in the 1998 Mill Brae Sale with another maternal brother selling for \$3,000 to Nicholas Ranch of Paxico, Kansas in the 2000 Mill Brae Sale.

This cow produced her first calf with a birth ratio of 99 in combination with a weaning ratio of 103 to follow in the productive tradition of her dam who combines a progeny birth ratio of 92 with progeny weaning and yearling ratios of 102 and 103 respectively on four calves and sells as Lot 65.

Sells with a bull calf at side (Lot 66A) calved September 22, 2000 by SITZ ALLIANCE 6595. Tattoo 042. Birth weight 88 lbs.

CARCASS
CAR WT
+15 .31
MARB
+03 .31
RIBEYE
+20 .31
FAT
+01 .31
%RP
+0 .31



MILL BRAE EXT GAMMER 8015 - Lot 68.

MILL BRAE MISS ADVENTURE FAMILY



MILL BRAE 2RT2 CHIEF 681 - Lot 70

69 LB RR TR Adventure 418

Cow • Calved: 9-25-93 • Tattoo: 418 • Reg. No.: 12128317
 Q A S Traveler 23-4
 R R Traveler 5204
 Eriskay of Rollin Rock 3302
 P S High Pockets
 LB Adventure HP 109
 MSU Miss Adventure 618

Band 234 of Ideal 3163
 QAS Blackbird Eve 601 1
 Shoshone Vantage JB23
 Eriskay of Rollin Rock 7003
 Ken Caryl Mr Angus 8017
 P S Playmate 905
 Columbus Adventure 584
 MSU Miss Revolution 458

CARCASS	
CAR WT	+6 .28
MARB	+30 .29
RIBEYE	+01 .28
FAT	+03 .28
%RP	-4 .28

This proven producer by the Pathfinder Sire RR Traveler 5204 has a progeny weaning ratio of 101 on five calves in the Mill Brae performance program with her progeny including a son who sold to Doug Queen of Rossville, Kansas in the 1998 Mill Brae Sale. The dam of this cow combines a progeny birth ratio of 95 with a progeny weaning ratio of 103 on six calves and a progeny yearling ratio of 101 on four head. A maternal sister produced Lot 70.
Bred to calve October 8, 2000 to PLOWMAN 1627 OF MILL BRAE SAR. Exposed to MILL BRAE EXT 6270 from January 20, 2000 to February 14, 2000.

BW	WW	MILK	YW	SC
+9 .73	+20 .66	+19 .64	+45 .66	+40 .31



MILL BRAE 8180 TRAV 681 - The dam of this \$3,500 feature of the 2000 Mill Brae Sale sells as Lot 70.

70 Mill Brae 2RT2 Chief 681

Cow • Calved: 10-1-96 • Tattoo: 681 • Reg. No.: 12840114
 R R Traveler 5204
 Rito 2RT2 of OB5 RR Traveler
 Rita OB5 of 8E23 Bando
 GDAR SVF Chief
 LB Chief Adventure 566
 LB Adventure HP 109

Q A S Traveler 23-4
 Eriskay of Rollin Rock 3302
 Tehama Bando 155
 Rita 8E23 of 5H28 Traveler
 G D A R Executive 727
 LT Forever Lady 395 GDAR
 P S High Pockets
 MSU Miss Adventure 618

CARCASS	
CAR WT	+3 .25
MARB	-.13 .26
RIBEYE	+03 .25
FAT	+00 .24
%RP	+0 .24

The dam of the \$3,500 co-third-top-selling bull of the 2000 Mill Brae Sale selected by Bill Brooks of Brooks Farm at Clayton, Kansas. This attractive and productive cow by the proven sire known as Rito 2RT2 combines a progeny birth ratio of 99 with a progeny weaning ratio of 109 on two calves and a progeny yearling ratio of 108 on one head. A maternal sister sells as Lot 71.
Sells with a bull calf at side (Lot 70A) calved October 1, 2000 by SITZ ALLIANCE 6595. Tattoo 064. Birth weight 74 lbs.

BW	WW	MILK	YW	SC
+1.4 .72	+30 .65	+23 .64	+61 .65	+06 .38

71 Mill Brae PM Adventure 834

Cow • Calved: 10-5-98 • Tattoo: 834 • Reg. No.: 13312675
 D H D Traveler 6807
 Plowman 1627 of Millbrae SAR
 M B Joanie 8E8 1627
 GDAR SVF Chief
 LB Chief Adventure 566
 LB Adventure HP 109

Q A S Traveler 23-4
 Bemindful Maid DHD 0807
 Rito 8E8 of 5H11 Traveler
 L B Joanie HP 9614
 G D A R Executive 727
 LT Forever Lady 395 GDAR
 P S High Pockets
 MSU Miss Adventure 618

CARCASS	
CAR WT	N/A
MARB	N/A
RIBEYE	N/A
FAT	N/A
%RP	N/A

A maternal sister to Lot 70 who in turn combines a progeny birth ratio of 99 with a progeny weaning ratio of 109 on two calves and a progeny yearling ratio of 108 on one head, producing a \$3,500 feature of the 2000 Mill Brae Sale. This moderate birth weight high growth female by the popular ABS Global sire Plowman 1627 of Mill Brae SAR earned individual weaning and yearling ratios of 107 in the Mill Brae performance program.
Bred to calve November 2, 2000 to SITZ ENTENSIFIER 8206.

BW	WW	MILK	YW	SC
+2.5 .36	+40 .36	+18 .28	+76 .28	+37 .30

MILL BRAE DELIA FAMILY



MB LADY DELIA AMB 602 - Lot 72

72 M B Lady Delia AMB 602

Cow • Calved: 9-16-95 • Tattoo: 602 • Reg. No.: 12557933

Bandolier Eston Durness 42B
Paramont Ambush 2172
EWS Miss Burgess 1720

Rito OG8 of 2036 Rito 8E8
LB OG8 Lady Delia 403
LB 6006 Lady Delia 9159

Bandolier Eston G V 21X
Glendoddie Burgess Bardella
Schearbrook Shoshone
Choicy of Hillendale 44

Rito 8E8 of 5H11 Traveler
Leachman Blackbird 2036
S A F Power Drive 6006
L B Lady Delia H P 7174

CARCASS	
CAR WT	-2 .27
MARB	+12 .28
RIBEYE	+07 .27
FAT	+00 .26
%RP	+2 .26

The dam of two \$3,000 bulls with one selected by Howes

Ranch Management of Whiting, Kansas in the 1999 Mill Brae Sale and another selected by Gary Zibell of Holton, Kansas in the 2000 Mill Brae Sale. This productive and attractive daughter of the Pathfinder Sire Paramont Ambush 2172 has a progeny birth ratio of 94 in combination with a progeny weaning ratio of 102 on three calves and a progeny yearling ratio of 102 on two head produced from a dam who records a progeny weaning ratio of 103 on five calves and a progeny yearling ratio of 103 on four head and sells as Lot 74.

A maternal sister sells as Lot 73.

Bred to calve October 4, 2000 to SITZ ALLIANCE 6495. Exposed to MILL BRAE EXT 6270 from January 20, 2000 to February 14, 2000.

BW	WW	MILK	YW	SC
+9 .71	+36 .65	+19 .62	+61 .65	+35 .39

74 LB OG8 Lady Delia 403

Cow • Calved: 9-10-93 • Tattoo: 403 • Reg. No.: 12128299

Rito 8E8 of 5H11 Traveler
Rito OG8 of 2036 Rito 8E8
Leachman Blackbird 2036

S A F Power Drive 6006
LB 6006 Lady Delia 9159
LB Lady Delia HP 7174

CARCASS	
CAR WT	N/A
MARB	N/A
RIBEYE	N/A
FAT	N/A
%RP	N/A

The dam of both the high performing two-year-old female featured as Lot 73 and the proven producer featured as Lot 72 who in turn produced two \$3,000 sons.

This cow records a progeny weaning ratio of 103 on five calves and a progeny yearling ratio of 103 on four head from the proven Delia family produced from a dam who combines a progeny birth ratio of 90 with a progeny weaning ratio of 102 on five calves.

Bred to calve October 7, 2000 to PLOWMAN 1627 OF MILL BRAE SAR. Exposed to MILL BRAE EXT 6270 from January 20, 2000 to February 14, 2000.

BW	WW	MILK	YW	SC
+2.8 .71	+41 .65	+16 .66	+69 .63	+12 .38

73 Mill Brae Plowman Delia 806

Cow • Calved: 9-14-98 • Tattoo: 806 • Reg. No.: 13312685

D H D Traveler 6807
Plowman 1627 of Millbrae SAR
M B Joanie 8E8 1627

Rito OG8 of 2036 Rito 8E8
LB OG8 Lady Delia 403
LB 6006 Lady Delia 9159

Q A S Traveler 23-4
Bemindful Maid DHD 0807
Rito 8E8 of 5H11 Traveler
L B Joanie HP 9614

Rito 8E8 of 5H11 Traveler
Leachman Blackbird 2036
S A F Power Drive 6006
L B Lady Delia H P 7174

CARCASS	
CAR WT	N/A
MARB	N/A
RIBEYE	N/A
FAT	N/A
%RP	N/A

Ranking in the top one percent for both Weaning Weight EPD

and Yearling Weight EPD, this high performance female earned an individual weaning ratio of 109 and an individual yearling ratio of 112 blending the Delia and Joanie families by the popular ABS Global sire Plowman 1627 of Mill Brae SAR.

a maternal sister to the cow featured as Lot 72 who produced two \$3,000 sons selling in the 1999 and 2000 Mill Brae Sales.

The dam of this female records a progeny weaning ratio of 103 on five calves and a progeny yearling ratio of 103 on four head and sells as Lot 74.

Sells with a bull calf at side (Lot 73A) calved September 9, 2000 by LEACHMAN RIGHT TIME. Tattoo 012. Birth weight 81 lbs.

BW	WW	MILK	YW	SC
+4.3 .35	+50 .36	+16 .28	+90 .27	+47 .28



MILL BRAE PLOWMAN DELIA 806 - Lot 73