

# MILL BRAE BALNORMA FAMILY



MB BALNORMA BANDO 3508 - Lot 54

## 54 MB Balnorma Bando 3508

Cow • Calved: 9-7-92 • Tattoo: 3508 • Reg. No.: #11945205  
 Band 234 of Ideal 3163 Band 602 of Ideal 928 72  
 Tehama Bando 155 Rito 149 of Ideal 443  
 Tehama Blackcap G373 Tehama 72 Rito 380  
 Tehama Blackcap E475  
 Leachman Paragon Brost Power Drive  
 LB PAR Balnorma 0644 Leachman Queen 0589  
 LB Jackie Balnorma 606E Walbridge Balnorma 896

CARCASS
CAR WT
+7 .29
MARB
+0.05 .29
RIBEYE
+0.04 .29
FAT
-0.01 .29
%RP
+1 .29

### PATHFINDER DAM.

A proven Pathfinder Dam and Mill Brae featured donor with a progeny birth ratio of 98 combined with a progeny weaning ratio of 104 on five natural calves and a progeny yearling ratio of 106 on three head.  
 A daughter who sells as Lot 55 weaned her first three calves with an average ratio of 107 and the two sons of this cow are the Mill Brae herd sire featured as Reference Sire C and a bull who sold for \$2,400 to Harry Atwell of Delhos, Kansas in the 2000 Mill Brae Sale.  
**Sells with a heifer calf at side (Lot 54A) calved September 10, 2000 by LEACHMAN RIGHT TIME. Tattoo 014. Birth weight 78 lbs.**

BW	WW	MILK	YW	SC
-6	.76	+24	.68	+19
.68	+50	.67	-.46	.31

## 54B Mill Brae PM Balnorma 969

Cow • Calved: 10-3-99 • Tattoo: 969 • Reg. No.: 13584334  
 D H D Traveler 6807 Q A S Traveler 23-4  
 Plowman 1627 of Millbrae SAR Bemindful Maid DHD 0807  
 M B Joanie 8E8 1627 L B Joanie HP 9614  
 Tehama Bando 155 Band 234 of Ideal 3163  
 MB Balnorma Bando 3508 Tehama Blackcap G373  
 LB PAR Balnorma 0644 Leachman Paragon  
 LB Jackie Balnorma 606D

CARCASS
CAR WT
N/A
MARB
N/A
RIBEYE
N/A
FAT
N/A
%RP
N/A

A blending of two great Mill Brae cow families by the ABS Global high performance sire Plowman 1627 of Mill Brae SAR produced as a natural calf from a Pathfinder Dam and proven donor who records a progeny weaning ratio of 98 in combination with a progeny weaning ratio of 104 on five calves and a progeny yearling ratio of 106 on three head.  
 A maternal sister who sells as Lot 55 weaned her first three calves with an average ratio of 107.  
 A maternal brother is a Mill Brae herd sire and another sold for \$2,400 in the 2000 Mill Brae Sale.

BW	WW	MILK	YW	SC
+2.8	.37	+35	.37	+17
.29	+71	.25	+25	.31



DHD TRAVELER 6807 - His sire.

## C Mill Brae 6807 Trav 3508

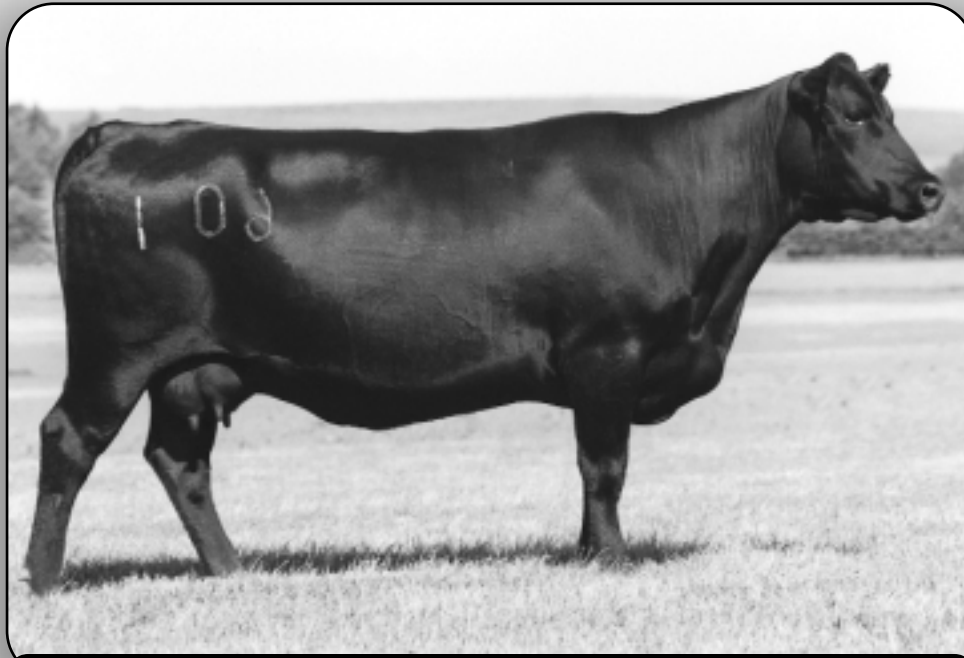
Bull • Calved: 9-10-96 • Tattoo: 3508 • Reg. No.: 12840152  
 QAS Traveler 23-4 Band 234 of Ideal 3163  
 DHD Traveler 6807 QAS Blackbird Eve 601 1  
 Bemindful Maid DHD 0807 PBC 707 1M F0203  
 Bemindful Maid or RR 1079  
 Tehama Banco 155 Band 234 of Ideal 3163  
 MB Balnorma Bando 3508 Tehama Blackcap G373  
 LB Par Balnorma 0644 Leachman Paragon  
 L B Jackie Balnorma 606D

### FOR REFERENCE ONLY.

Ranking among the most elite three percent among current sires for Birth EPD, this proven low birth weight sire is a three-quarter brother to the featured Select Sires bull known as Rito 616 backed by the Pathfinder Sires DHD Traveler 6807 and Tehama Bando 155 from a Pathfinder Dam who combines a progeny birth ratio of 98 with a progeny weaning ratio of 104 on five natural calves and a progeny yearling ratio of 106 on three head.  
 A full brother sold for \$2,400 in the 2000 Mill Brae Sale and a maternal sister who sells as Lot 55 has a progeny weaning ratio of 107 on three calves.

BW	WW	MILK	YW	SC
-1.2	.82	+24	.76	+18
.59	+60	.70	-.29	.40

# MILL BRAE BALNORMA FAMILY



MB BALNORMA EXT 601 - Lot 55

## 55 M B Balnorma EXT 601

Cow • Calved: 9-14-95 • Tattoo: 601 • Reg. No.: 12562282  
 Emulation N Bar 5522  
 N Bar Emulation EXT  
 N Bar Primrose 2424  
 Tehama Bando 155  
 MB Balnorma Bando 3508  
 LB PAR Balnorma 0644

CARCASS
CAR WT
+14 .31
MARB
+07 .31
RIBEYE
+13 .31
FAT
+02 .31
%RP
-2 .31

Earning a progeny weaning ratio of 107 on her first three

calves and a progeny yearling ratio of 103 on two head, this outstanding young cow has followed in the productive tradition of her Pathfinder Dam featured as Lot 54 who balances a progeny birth ratio of 98 with a progeny weaning ratio of 104 on five natural calves and a progeny yearling ratio of 106 on three head.

A maternal brother is a Mill Brae herd sire and another sold for \$2,400 in the 2000 Mill Brae Sale with a maternal sister selling as Lot 57.

A daughter sells as Lot 56.

**Sells with a bull calf at side (Lot 55A) calved October 1, 2000 by SITZ ALLIANCE 6595. Tattoo 062. Birth weight 84 lbs.**

BW	WW	MILK	YW	SC
+1.9 .73	+37 .66	+21 .63	+71 .65	-.44 .31

## 56 Mill Brae 2RT2 Balnorma 706

Cow • Calved: 9-15-97 • Tattoo: 706 • Reg. No.: 13065490  
 R R Traveler 5204  
 Rito 2RT2 of OB5 RR Traveler  
 Rita OB5 of 8E23 Bando  
 N Bar Emulation EXT  
 MB Balnorma EXT 601  
 MB Balnorma Bando 3508  
 Q A S Traveler 23-4  
 Eriskay of Rollin Rock 3302  
 Tehama Bando 155  
 Rita 8E23 of 5H28 Traveler  
 Emulation N Bar 5522  
 N Bar Primrose 2424  
 Tehama Bando 155  
 LB PAR Balnorma 0644

CARCASS
CAR WT
+11 .27
MARB
-.04 .28
RIBEYE
+01 .27
FAT
+03 .27
%RP
-.4 .27

Bred for a combination of calving ease, maternal strength and

udder quality, this young cow is the first daughter of the female featured as Lot 55 who records a progeny weaning ratio of 107 on three calves and a progeny yearling ratio of 103 on two head, descending from a grandam who is a Pathfinder Dam and featured Mill Brae donor who sells as Lot 54.

A maternal brother to the dam of this cow is a proven calving ease sire who serves as a Mill Brae herd sire.

**Sells with a bull calf at side (Lot 56A) calved September 18, 2000 by ALBERDA TRAVELER 416. Tattoo 031. Birth weight 80 lbs.**

BW	WW	MILK	YW	SC
+1.2 .70	+34 .65	+19 .61	+68 .64	-.08 .31

## 57 Mill Brae 9440 Balnorma 825

Cow • Calved: 9-25-98 • Tattoo: 825 • Reg. No.: 13315892  
 Scotch Cap  
 R R Scotchcap 9440  
 Blackcap of R R 5367  
 P S Power Play  
 Hoff Band 07 of S C 509  
 R R Vantage 3352  
 Blackcap of R R 5367  
 Band 234 of Ideal 3163  
 Tehama Blackcap G373  
 Leachman Paragon  
 LB Jackie Balnorma 606D

CARCASS
CAR WT
+10 .28
MARB
+00 .29
RIBEYE
-.08 .28
FAT
+04 .28
%RP
-.6 .28

A maternal sister to the attractive and productive cow featured as Lot 55 who weaned her first three calves with an average ratio of 107.

This female combines an individual birth ratio of 90 with an individual weaning ratio of 107 and an individual yearling ratio of 101 produced as a natural calf from the Mill Brae Pathfinder Dam and donor featured as Lot 54 who combines a progeny birth ratio of 98 with a progeny weaning ratio of 104 on five calves and a progeny yearling ratio of 106 on three head.

A maternal brother is a proven calving ease herd sire at Mill Brae Ranch.

**Sells with a heifer calf at side (Lot 57A) calved September 10, 2000 by LEACHMAN RIGHT TIME. Tattoo 018. Birth weight 62 lbs.**

BW	WW	MILK	YW	SC
+0.8 .40	+34 .40	+19 .38	+65 .32	-.13 .31



LEACHMAN RIGHT TIME - Featuring calves by this proven Pathfinder Sire who is a three-quarter brother to Lot 55.

BW	WW	MILK	YW	SC	CAR. WT.	MARB.	RIBEYE	FAT	% RP
+2.5 .99	+43 .99	+21 +.5	+81 .99	-.07 .99	+15 .91	-.07 .92	+.20 .90	+02 .88	-.2 .88

# MILL BRAE PROVEN FAMILIES



MILL BRAE 9440 MARY 828 - Lot 60

## 58 MB Blkcap Mary Bando 3515

Cow • Calved: 9-13-92 • Tattoo: 3515 • Reg. No.: #11945209  
 Band 234 of Ideal 3163  
 Tehama Bando 155  
 Tehama Blackcap G373  
 Garney Big Stick  
 MB Blackcap Mary BS 1546  
 Blackcap Mary 894

CARCASS
CAR WT
N/A
MARB
N/A
RIBEYE
N/A
FAT
N/A
%RP
N/A

BW	WW	MILK	YW	SC					
+6	.74	+28	.66	+22	.67	+48	.66	-.43	.27

This proven Pathfinder Dam by the Pathfinder Sire Tehama Bando 155 has a progeny weaning ratio of 107 on four calves and a progeny yearling ratio of 104 on two head from a dam who combines a progeny birth ratio of 98 with progeny weaning and yearling ratios of 102 and 101 respectively on six calves. A son sold for \$1,900 to John Baker of Harper, Kansas in the 1998 Mill Brae Sale. **Bred to calve October 28, 2000 to PLOWMAN 1627 OF MILL BRAE SAR. Exposed to MILL BRAE EXT 6270 from January 20, 2000 to February 14, 2000.**

## 58B Mill Brae 058H Blackcap 9013

Cow • Calved: 11-24-99 • Tattoo: 9013 • Reg. No.: 13584298  
 Kruggerand of Donamere 490  
 QLC B50 Kruggerand 490 A372H  
 QLC B17 Queen Mother X014A0  
 Band 234 of Ideal 3163  
 Tehama Bando 155  
 MB Blackcap Mary Bando 3515  
 MB Blackcap Mary BS1546

CARCASS
CAR WT
N/A
MARB
N/A
RIBEYE
N/A
FAT
N/A
%RP
N/A

BW	WW	MILK	YW	SC				
+4.2	.34	+38	.31	+23	.23	+68	.15	N/A

This granddaughter of the Pathfinder Sires Kruggerand of Donamere 490 and Tehama Bando 155 by a high growth sire earned an individual weaning ratio of 103 from a Pathfinder Dam who records a progeny weaning ratio of 107 on four calves and a progeny yearling ratio of 104 on two head. A maternal brother sold for \$1,900 to John Baker of Harper, Kansas in the 1998 Mill Brae Sale.



MILL BRAE FOREMAN 3616 - This member of the Accelerated Genetics A.I. Stud is from the same family as Lot 62.

BW	WW	MILK	YW	SC	CAR. WT.	MARB.	RIBEYE	FAT	% RP										
+3.5	.87	+38	.81	+19	.58	+73	.78	+27	.39	+9	.28	+0.9	.29	-.09	.28	+0.5	.28	-0.7	.28

## 59 MB 5204 Black Mary 617

Cow • Calved: 9-28-95 • Tattoo: 617 • Reg. No.: 12557936  
 Q A S Traveler 23-4  
 R R Traveler 5204  
 Eriskay of Rollin Rock 3302  
 Tehama Bando 155  
 LB Bando Black Mary 441  
 MB Scotch Black Mary 2519

CARCASS	
CAR WT	
+4	.30
MARB	
+30	.30
RIBEYE	
-.05	.30
FAT	
+0.3	.30
%RP	
-.4	.30

BW	WW	MILK	YW	SC					
-.1	.72	+28	.66	+24	.61	+54	.66	+21	.31

Recording a modest progeny birth ratio of 97 in combination with a progeny weaning ratio of 107 on three calves, this cow was produced from a dam with progeny weaning and yearling ratios of 103 and 102 respectively on three calves backed by the calving ease, marbling and maternal genetics of the Pathfinder Sires RR Traveler 5204 and Tehama Bando 155. A two-year-old daughter sells as Lot 60.

**Bred to calve October 15, 2000 to PLOWMAN 1627 OF MILL BRAE SAR. Exposed to MILL BRAE EXT 6270 from January 20, 2000 to February 14, 2000.**

## 60 Mill Brae 9440 Mary 828

Cow • Calved: 9-28-98 • Tattoo: 828 • Reg. No.: 13315885  
 Scotch Cap  
 R R Scotchcap 9440  
 Blackcap of R R 5367  
 R R Traveler 5204  
 MB 5204 Black Mary 617  
 LB Bando Black Mary 441

CARCASS	
CAR WT	
+8	.28
MARB	
+12	.29
RIBEYE	
-.13	.28
FAT	
+0.5	.28
%RP	
-.8	.28

BW	WW	MILK	YW	SC					
+2.0	.38	+37	.38	+22	.36	+67	.32	+21	.31

This high performing two-year-old earned an individual weaning ratio of 111 in the Mill Brae performance program from the mating of the Pathfinder Sire RR Scotchcap 9440 to a cow who combines a progeny birth ratio of 97 with a progeny weaning ratio of 107 on three calves, backed by the Pathfinder Sires RR Traveler 5204 and Tehama Bando 155. **Sells with a bull calf at side (Lot 60A) calved September 9, 2000 by LEACHMAN RIGHT TIME. Tattoo 013. Birth weight 82 lbs.**

## 61 Mill Brae Bando Q M 7004

Cow • Calved: 2-1-97 • Tattoo: 7004 • Reg. No.: 12906038  
 Band 234 of Ideal 3163  
 Tehama Bando 155  
 Tehama Blackcap G373  
 P S High Pockets  
 MB Queenmere HP 1619  
 LB Queenmere Gari 914

CARCASS	
CAR WT	
+3	.28
MARB	
+11	.29
RIBEYE	
+0.0	.28
FAT	
+0.0	.28
%RP	
+0	.28

BW	WW	MILK	YW	SC					
+2.4	.71	+26	.66	+19	.62	+53	.68	-.41	.31

This daughter of the Pathfinder Sire Tehama Bando 155 was produced from a Pathfinder Dam who records progeny weaning and yearling ratios of 103 and 105 respectively on six calves. Maternal brothers have sold to Kenneth Combes of Waverly, Kansas and to Dan Kruse of Ellsworth, Kansas in the 1995 and 1996 Mill Brae Sales and a maternal sister was selected by Mark Vanwinkel of Abilene, Kansas in the 1999 Mill Brae Sale.

**Bred to calve October 3, 2000 to PLOWMAN 1627 OF MILL BRAE SAR. Exposed to MILL BRAE EXT 6270 from January 20, 2000 to February 14, 2000.**

## 62 M B Actress Bando 3604

Cow • Calved: 1-29-93 • Tattoo: 3604 • Reg. No.: 11987976  
 Band 234 of Ideal 3163  
 Tehama Bando 155  
 Tehama Blackcap G373  
 Scotch Power Pack Power 389  
 MB Scotch Actress 1632  
 Actress of Lynn Brae

CARCASS
CAR WT
MARB
RIBEYE
FAT
%RP

BW	WW	MILK	YW	SC					
+4.5	.75	+28	.67	+18	.67	+53	.67	-.22	.38

This cow with a progeny weaning ratio of 102 on five calves was produced from a Pathfinder Dam who is a maternal sister to MB 315 Actress 3616, a cow who is today a featured donor in the Prairie Creek herd in Illinois who is best known as the dam of Mill Brae Foreman 3616, the top-performing and \$12,000 top-selling bull of the 1998 Mill Brae Sale to Stevenson Angus Ranch of Montana who is also featured in the Accelerated Genetics A.I. Stud.

**Bred to calve October 26, 2000 to PLOWMAN 1627 OF MILL BRAE SAR. Exposed to MILL BRAE EXT 6270 from January 20, 2000 to February 14, 2000.**