

## EXT DAUGHTERS



MILL BRAE EXT BARBARA 695 - Lot 41

### 41 Mill Brae EXT Barbara 695

Cow • Calved: 10-25-96 • Tattoo: 695 • Reg. No.: 12840125

Emulation N Bar 5522  
N Bar Emulation EXT  
N Bar Primrose 2424

Tehama Bando 155  
MB Barbara Bando 4060  
MB Barbara Trav 1528

Emulation 31  
Ankony 8F78 Lass 8F275  
Emulation 31  
Primrose N Bar 9962

Band 234 of Ideal 3163  
Tehama Blackcap G373  
Q A S Traveler 23-4  
L B Barbara BO 862

BW	WW	MILK	YW	SC
+3.4	.72	+37	.65	+21
.63	+68	.66	-.03	.38

An attractive and productive young cow by the Pathfinder Sire N Bar Emulation EXT with worlds of potential still ahead of her.

This cow records a progeny weaning ratio of 101 on her first two calves with a son selling to Hal Palensky of Strong City, Kansas in the 2000 Mill Brae Sale. Three-quarter siblings include Leachman Right Time and the cows who sell as Lots 20, 42 and 55.

**Sells with a heifer calf at side (Lot 41A) calved September 24, 2000 by SITZ ALLIANCE 6595. Tattoo 047. Birth weight 82 lbs.**

#### CARCASS

CAR WT	+12	.31
MARB	+10	.31
RIBEYE	+10	.31
FAT	+02	.31
%RP	-.02	.31

### 42 Mill Brae EXT Zara 709

Cow • Calved: 9-17-97 • Tattoo: 709 • Reg. No.: 13065493

Emulation N Bar 5522  
N Bar Emulation EXT  
N Bar Primrose 2424

Tehama Bando 155  
LB Bando Zara 447  
M B Tonto Zara 2529

Emulation 31  
Ankony 8F78 Lass 8F275  
Emulation 31  
Primrose N Bar 9962

Band 234 of Ideal 3163  
Tehama Blackcap G373  
Leachman Tonto  
L B Zara 616

BW	WW	MILK	YW	SC
+2.5	.68	+37	.64	+23
.60	+76	.63	-.49	.31

Earning a progeny weaning ratio of 110 in combination with a modest progeny birth ratio of 96 on

her first calf, this productive young cow ranks in the top three percent among current dams for Yearling Weight EPD, representing this successful blend of the Pathfinder Sires N Bar Emulation EXT and Tehama Bando 155.

A maternal brother was a selection by Fuhrman Farms of Lancaster, Kansas from the 1998 Mill Brae Sale.

**Sells with a heifer calf at side (Lot 42A) calved September 24, 2000 by SITZ ALLIANCE 6595. Tattoo 048. Birth weight 82 lbs.**

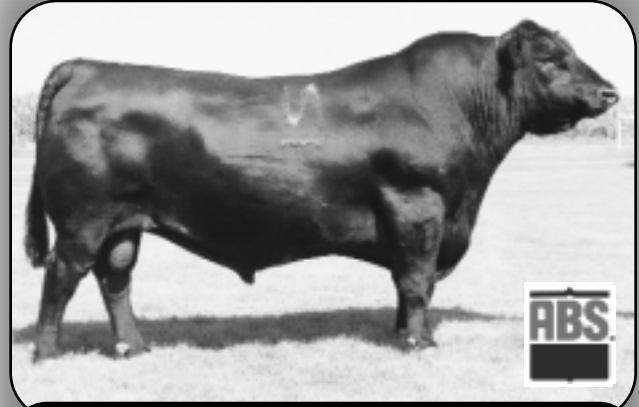
#### CARCASS

CAR WT	+12	.31
MARB	+05	.31
RIBEYE	+12	.31
FAT	+01	.31
%RP	-1	.31



MILL BRAE EXT ZARA 709 - Lot 42

## KARAMA



N BAR EMULATION EXT - Featuring the influence of this established Pathfinder Sire.

### 43 Mill Brae EXT Karama 707

Cow • Calved: 9-16-97 • Tattoo: 707 • Reg. No.: 13065491

Emulation N Bar 5522  
N Bar Emulation EXT  
N Bar Primrose 2424

GAR Sleep Easy 1009  
MB SE 1009 Karama Belle 648  
LB OG8 Karama Belle 422

Emulation 31  
Ankony 8F78 Lass 8F275  
Emulation 31  
Primrose N Bar 9962

Tehama Bando 155  
Blackclass G A R 103  
Rito OG8 of 2036 Rito 8E8  
LB Karama Belle HP 456

BW	WW	MILK	YW	SC
+1.6	.68	+39	.63	+20
.59	+75	.62	-.52	.31

Featuring a stacked performance, marbling, maternal and moderate

birth weight tabulation, this young cow by the Pathfinder Sire N Bar Emulation EXT balances a Yearling Weight EPD ranking in the top three percent among current dams with a Birth EPD ranking in the top twenty-five percent from a dam who records a progeny weaning ratio of 106 on her first two calves and a progeny yearling ratio of 111 on one head.

**Sells with a bull calf at side (Lot 43A) calved September 17, 2000 by SITZ ALLIANCE 6595. Tattoo 029. Birth weight 92 lbs.**

### 43B Mill Brae Karama CT 924

Cow • Calved: 9-17-99 • Tattoo: 924 • Reg. No.: 13584310

R R Traveler 5204  
California Traveler  
Tehama Eisa Erica Y699

N Bar Emulation EXT  
Mill Brae EXT Karama 707  
MB SE 1009 Karama Belle 648

Q A S Traveler 23-4  
Eriskay of Rollin Rock 3302  
Paramont Ambush 2172  
Tehama Eisa Erica W602

Emulation N Bar 5522  
N Bar Primrose 2424  
G A R Sleep Easy 1009  
LB OG8 Karama Belle 422

BW	WW	MILK	YW	SC
-6	.36	+33	.37	+21
.31	+68	.26	+04	.31

One of several promising fall yearling heifers selling from the

mating of the Alta Genetics calving ease maternal and marbling sire California Traveler to a daughter of the Pathfinder Sire N Bar Emulation EXT. The grandam of this female, by the Pathfinder Sire GAR Sleep Easy 1009, records a progeny weaning ratio of 106 on two calves and a progeny yearling ratio of 111 on one head.

### 44 MB 6807 Goldn Karama 6015

Cow • Calved: 2-9-96 • Tattoo: 6015 • Reg. No.: 12637958

Q A S Traveler 23-4  
DHD Traveler 6807  
Bemindful Maid DHD 0807

Papa Durabull 9805  
MB Golden Karama Dura 4053  
MB Golden Karama HP 1643

Band 234 of Ideal 3163  
QAS Blackbird Eve 601 1  
PBC 707 1M F0203  
Bemindful Maid of RR 1079

Scotch Cap  
Envious Blackbird DHD 3811  
P S High Pockets  
L B Golden Karama 5174

BW	WW	MILK	YW	SC
+2.2	.69	+33	.65	+18
.60	+70	.64	-.05	.31

A young cow by the Pathfinder Sire DHD Traveler 6807 produced

from a daughter of the Pathfinder Sire Papa Durabull 9805 who records progeny weaning and yearling ratios of 106 and 107 respectively.

A maternal brother to the dam of this cow sold for \$2,200 to Stuewe Ranch of Paxico, Kansas in the 1997 Mill Brae Sale and another sold to Brad Hajny of Esbon, Kansas in the 2000 Mill Brae Sale with their maternal sister selling to Mark Vanwinkel in the 1996 Sale.

**Bred to calve October 21, 2000 to PLOWMAN 1627 OF MILL BRAE SAR. Exposed to MILL BRAE EXT 6270 from January 20, 2000 to February 14, 2000.**

#### CARCASS

CAR WT	+11	.31
MARB	+18	.31
RIBEYE	+13	.31
FAT	+02	.31
%RP	-.1	.31

#### CARCASS

CAR WT	+4	.27
MARB	+26	.27
RIBEYE	-.03	.26
FAT	+00	.26
%RP	-.2	.26

#### CARCASS

CAR WT	+7	.27
MARB	+10	.28
RIBEYE	+19	.27
FAT	-.01	.27
%RP	+3	.27

# MILL BRAE KARAMA FAMILY



MB KARAMA BANDO 2600 - Lot 45

## 45 MB Karama Bando 2600

Cow • Calved: 2-1-92 • Tattoo: 2600 • Reg. No.: 11784946  
 Band 234 of Ideal 3163 Band 602 of Ideal 928 72  
 Tehama Bando 155 Rito 149 of Ideal 443  
 Tehama Blackcap G373 Tehama 72 Rito 330  
 Tehama Blackcap E475  
 Leachman Paragon Brost Power Drive  
 L B PAR Karama 0553 Leachman Queen 0589  
 LB Karama Jackie 6191 Cracker Jack Baros 147M  
 LB Karama Progress 440

CARCASS
CAR WT
+7 .29
MARB
+05 .29
RIBEYE
+04 .29
FAT
-01 .29
%RP
+1 .29

This productive Mill Brae donor records a progeny weaning ratio of 105 on six natural calves and a progeny yearling ratio of 102 on five head with five sons selling for an average of \$2,680 in past Mill Brae sales including a \$3,500 bull selected by Dave Glotzbach of Maple Hill, Kansas, a \$2,900 son selected by Michaelis Ranch of Paxico, Kansas in the 1997 Sale, an \$1,800 son selected by Dale Urish of Scranton, Kansas in the 1999 Sale and two \$2,600 sons to Roy E. Cobbs Ranch of Ramona, Oklahoma in the 2000 Sale.

BW	WW	MILK	YW	SC	
+3.0	.74	+33 .68	+19 .69	+54 .67	-65 .39

Producing daughters sell as Lots 46 and 47.

**Sells with a heifer calf at side (Lot 45A) calved September 18, 2000 by PLOWMAN 1627 OF MILLBRAE SAR. Tattoo 032. Birth weight 90 lbs.**

## 46 Mill Brae Krug Karama 802

Cow • Calved: 9-10-98 • Tattoo: 802 • Reg. No.: +13321255  
 CH Stacker 7040 Rito 2100 G D A R  
 Krugerrand of Donamere 490 Merle of C H 2031  
 Donamere Bachel Beauty 288 Ankonian Cornhusker  
 Donamere Bachel Beauty 722  
 Tehama Bando 155 Band 234 of Ideal 3163  
 MB Karama Bando 2600 Tehama Blackcap G373  
 LB PAR Karama 0553 Leachman Paragon  
 LB Karama Jackie 6191

CARCASS
CAR WT
+13 .26
MARB
+02 .27
RIBEYE
+26 .26
FAT
-.02 .25
%RP
+4 .25

A flush sister to a \$2,600 bull in the 2000 Mill Brae Sale selected by Roy E. Cobbs Ranch of Ramona, Oklahoma who also selected a \$2,600 bull in the same sale, with a total of five brothers selling for an average of \$2,680 in past Mill Brae sales.

BW	WW	MILK	YW	SC	
+3.4	.09	+40 .08	+20 .09	+77 .07	+04 .31

Offering the blend of growth, maternal and moderate birth weight genetics, this young female by the Pathfinder Sire Krugerrand of Donamere 490 was produced from a donor dam who records a progeny weaning ratio of 105 on six calves and a progeny yearling ratio of 102 on five head.

A maternal sister who sells as Lot 47 weaned her first two calves with an average ratio of 107.

**Sells with a heifer calf at side (Lot 46A) calved September 17, 2000 by LEACHMAN RIGHT TIME. Tattoo 027. Birth weight 71 lbs.**

## 45B Mill Brae Karama Kruger 904

Cow • Calved: 9-8-99 • Tattoo: 904 • Reg. No.: +13590076  
 CH Stacker 7040 Rito 2100 G D A R  
 Krugerrand of Donamere 490 Merle of C H 2031  
 Donamere Bachel Beauty 288 Ankonian Cornhusker  
 Donamere Bachel Beauty 722  
 Tehama Bando 155 Band 234 of Ideal 3163  
 MB Karama Bando 2600 Tehama Blackcap G373  
 LB PAR Karama 0553 Leachman Paragon  
 LB Karama Jackie 6191

CARCASS
CAR WT
+13 .26
MARB
+02 .27
RIBEYE
+26 .26
FAT
-.02 .25
%RP
+4 .25

A full sister to both Lot 46 and to a \$2,600 bull in the 2000

BW	WW	MILK	YW	SC	
+3.4	.09	+40 .08	+20 .09	+77 .07	+04 .31

Mill Brae Sale selected by Roy E. Cobbs Ranch of Ramona, Oklahoma who also selected a \$2,600 maternal brother in the same sale with a total of five brothers selling for an average of \$2,680.

This daughter of the high performance Pathfinder Sire Krugerrand of Donamere 490 was produced from a donor dam who records a progeny weaning ratio of 105 on six calves and a progeny yearling ratio of 102 on five head.

A maternal sister sells as Lot 47.



MILL BRAE KARAMA KRUGER 904 - Lot 45B

# MILL BRAE KARAMA FAMILY



MILL BRAE 2RT2 KARAMA 667 - Lot 47

A beautiful young cow with a progeny birth ratio of 99 combined with a progeny weaning ratio of 107 on her first two calves and a progeny yearling ratio of 112 on one head.

This daughter of the Select Sires proven sire Rito 2RT2 of OB5 RR Traveler was produced from the Mill Brae donor featured as Lot 45 who records a progeny weaning ratio of 105 on six calves and a progeny yearling ratio of 102 on five head.

Five maternal brothers to this cow have sold for an average of \$2,680 in past Mill Brae sales including a \$3,500 bull to Dave Glotzbach of Maple Hill, Kansas, a \$2,900 bull to Michaelis Ranch of Paxico, Kansas, two \$2,600 bulls to Roy E. Cobbs Ranch in Ramona, Oklahoma and an \$1,800 bull to Dale Urish of Scranton, Kansas. The yearling daughter of this cow featured as Lot 47B promises to be a favorite of this spectacular sale offering.

**Sells with a bull calf at side (Lot 47A) calved September 19, 2000 by LEACHMAN RIGHT TIME. Tatoo 035. Birth weight 94 lbs.**

## 47 Mill Brae 2RT2 Karama 667

Cow • Calved: 9-21-96 • Tattoo: 667 • Reg. No.: 12840103  
 R R Traveler 5204  
 Rito 2RT2 of OB5 RR Traveler  
 Rita OB5 of 8E23 Bando  
 Tehama Bando 155  
 MB Karama Bando 2600  
 LB PAR Karama 0553

Q A S Traveler 23-4  
 Eriskay of Rollin Rock 3302  
 Tehama Bando 155  
 Rita 8E23 of 5H28 Traveler  
 Band 234 of Ideal 3163  
 Tehama Blackcap G373  
 Leachman Paragon  
 L B Karama Jackie 6191

CARCASS
CAR WT
+8 .27
MARB
-.05 .28
RIBEYE
-.02 .27
FAT
+.02 .27
%RP
-.3 .27

BW	WW	MILK	YW	SC	
+3.2	.72	+36 .66	+19 .61	+64 .66	-.08 .31

## 47B Mill Brae Plwmn Karama 972

Cow • Calved: 10-6-99 • Tattoo: 972 • Reg. No.: 13584335  
 D H D Traveler 6807  
 Plowman 1627 of Millbrae SAR  
 M B Joanie 8E8 1627  
 Rito 2RT2 of OB5 RR Traveler  
 Mill Brae 2RT2 Karama 667  
 MB Karama Bando 2600

Q A S Traveler 23-4  
 Bemindful Maid DHD 0807  
 Rito 8E8 of 5H11 Traveler  
 L B Joanie HP 9614  
 R R Traveler 5204  
 Rita OB5 of 8E23 Bando  
 Tehama Bando 155  
 L B PAR Karama 0553

CARCASS
CAR WT
N/A
MARB
N/A
RIBEYE
N/A
FAT
N/A
%RP
N/A

BW	WW	MILK	YW	SC	
+3.9	.37	+45 .36	+17 .27	+83 .24	+44 .31



MILL BRAE PLOWMAN KARAMA 972 - Lot 47B

A special favorite of the fall 1999 Mill Brae calf crop.

This promising brood cow prospect blends the best of the Karama and Joanie families by the popular ABS Global sire Plowman 1627 of Mill Brae SAR.

Ranking in the top two percent among non-parent females for Yearling Weight EPD and in the top three percent for Weaning Weight EPD, this heifer earned an individual weaning ratio of 102 in the competitive Mill Brae performance program from an outstanding dam who combines a progeny birth ratio of 99 with a progeny weaning ratio of 107 on her first two calves and a progeny yearling ratio of 112 on one head. The grandam of this heifer is the proven Mill Brae donor featured as Lot 45 who records a progeny weaning ratio of 105 on six calves and a progeny yearling ratio of 102 on five head.

Five maternal brothers to the dam of this heifer have sold for an average of \$2,680 in past Mill Brae sales.

# KARAMA



QAS TRAVELER 23-4 - Featuring daughters of this established Pathfinder Sire.

## 48 L B Karama Trav 517

Cow • Calved: 9-24-94 • Tattoo: 517 • Reg. No.: 12393193  
 Band 234 of Ideal 3163 Band 602 of Ideal 928 72  
 Q A S Traveler 23-4 Rito 149 of Ideal 443  
 Q A S Blackbird Eve 601 1 Burly Eric 991  
 V C S Blackbird 467  
 R&J Blastoff 2040 General J J Patton  
 L B Karama Lass 538 Southern Tall Erroline 29E  
 L B F Belle Kindness Brecht of Wye  
 Karama Lass F K

CARCASS
CAR WT
N/A
MARB
N/A
RIBEYE
N/A
FAT
N/A
%RP
N/A

This proven producer by the Pathfinder Sire QAS Traveler 23-4 produced a bull who sold for \$2,000 to Rich Dorhman of Delia, Kansas in the 1998 Mill Brae Sale.

The dam of this cow records a progeny weaning ratio of 106 on nine calves. **Sells with a heifer calf at side (Lot 48A) calved September 22, 2000 by PLOWMAN 1627 OF MILLBRAE SAR. Tattoo 046. Birth weight 80 lbs.**

## 49 MB OG8 Goldn Karama 4093

Cow • Calved: 3-28-94 • Tattoo: 4093 • Reg. No.: 12193458  
 Rito 8E8 of 5H11 Traveler  
 Rito OG8 of 2036 Rito 8E8  
 Leachman Blackbird 2036  
 Leachman Blackbird 9527  
 Cracker Jack Baros 147M  
 Jackie Golden Karama 3126  
 Karama Golden Lady  
 Loma Lanes Cracker Jack 12J  
 Georgina of Wetonka 1747  
 Goldspur E062  
 Karama Free

CARCASS
CAR WT
N/A
MARB
N/A
RIBEYE
N/A
FAT
N/A
%RP
N/A

A proven producer by the Mill Brae high performance sire knows as Rito OG8 with progeny weaning and yearling ratios of 100 and 102 respectively on three calves in the Mill Brae performance program from a dam who records a progeny weaning ratio of 103 on nine calves and a progeny yearling ratio of 101 on eight calves.

A daughter weaned her first calf with a ratio of 102 and a son sold for \$2,100 in the 1997 Mill Brae Sale. **Bred to calve October 4, 2000 to PLOWMAN 1627 OF MILL BRAE SAR. Exposed to MILL BRAE EXT 6170 from January 20, 2000 to February 14, 2000.**

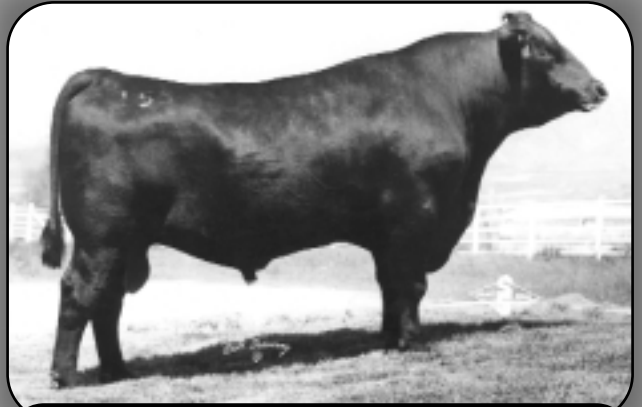
## 50 Mill Brae 2RT2 Karama 715

Cow • Calved: 9-20-97 • Tattoo: 715 • Reg. No.: 13065498  
 R R Traveler 5204 Q A S Traveler 23-4  
 Rito 2RT2 of 0B5 RR Traveler Eriskay of Rollin Rock 3302  
 Rito 0B5 of 8E23 Bando Tehama Bando 155  
 Rita 8E23 of 5H28 Traveler  
 RR 9440 Scotch Cap 1483 R R Scotch Cap 9440  
 MB SC 1483 Karama Lass 629 Eriskay of Rollin Rock 8211  
 MB Karama Lass HJ 3510 Cracker Jack Baros 147M  
 MB Karama Lass EQ 1536

CARCASS
CAR WT
+9 .27
MARB
-.09 .28
RIBEYE
-.09 .27
FAT
+0.03 .26
%RP
-.6 .26

A paternal sister to the Karama female featured as Lot 37 backed by the Select Sires bulls Rito 2RT2 of 0B5 RR Traveler and RR 9440 Scotch Cap 1483, descending from a Pathfinder grandam. **Sells with a bull calf at side (Lot 50A) calved September 19, 2000 by ALBERDA TRAVELER 416. Tattoo 037. Birth weight 80 lbs.**

# RUTH



TEHAMA BANDO 155 - Featuring daughters of this established Pathfinder Sire.

## 51 MB Bando Ruth 4062

Cow • Calved: 3-3-94 • Tattoo: 4062 • Reg. No.: 12198662  
 Band 234 of Ideal 3163 Band 602 of Ideal 928 72  
 Tehama Bando 155 Rito 149 of Ideal 443  
 Tehama Blackcap G373 Tehama 72 Rito 330  
 Tehama Blackcap E475  
 Emulation N Bar 5522 Emulation 31  
 LB N Bar Ruth 0621 Ankony 8F78 Lass 8F275  
 L B H8 Ruth 8649 Ken Caryl Hard Eight 3042  
 L B Jackie Ruth P 466 L B Jackie Ruth P 466

CARCASS
CAR WT
+3 .30
MARB
+0.09 .30
RIBEYE
-.04 .30
FAT
+0.01 .30
%RP
-.1 .30

Produced from a Pathfinder Dam, this daughter of the Pathfinder Sire Tehama Bando 155 is a full sister to Lot 52 whose three sons have highlighted past Mill Brae Sales.

A son of this cow sold to Bill Raine in the 1998 Mill Brae Sale. **Sells with a bull calf at side (Lot 51A) calved September 19, 2000 by PLOWMAN 1627 OF MILLBRAE SAR. Tattoo 034. Birth weight 94 lbs.**

## 52 MB Bando Ruth 2635

Cow • Calved: 2-27-92 • Tattoo: 2635 • Reg. No.: 11784952  
 Band 234 of Ideal 3163 Band 602 of Ideal 928 72  
 Tehama Bando 155 Rito 149 of Ideal 443  
 Tehama Blackcap G373 Tehama 72 Rito 330  
 Tehama Blackcap E475  
 Emulation N Bar 5522 Emulation 31  
 LB N Bar Ruth 0621 Ankony 8F78 Lass 8F275  
 L B H8 Ruth 8649 Ken Caryl Hard Eight 3042  
 L B Jackie Ruth P 466 L B Jackie Ruth P 466

CARCASS
CAR WT
+3 .30
MARB
+0.09 .30
RIBEYE
-.04 .30
FAT
+0.01 .30
%RP
-.1 .30

The dam of the \$3,500 third-top-selling bull of the 1997 Mill Brae Sale to Doug Sund of Overbrook, Kansas with another son selling for \$3,000 to Bruce Hedstrom of Lost Springs, Kansas in the 1995 Mill Brae Sale and another selected by Wilbur McMillen of Chanute, Kansas in the 1998 Mill Brae Sale.

This full sister to Lot 51 records a progeny weaning ratio of 102 on six calves and a progeny yearling ratio of 102 on four head from a Pathfinder Dam. **Sells without a calf. We believe the extreme heat experienced in early September caused this cow to calve too early.**

## 53 M B EXT Queen Ruth 703

Cow • Calved: 9-13-97 • Tattoo: 703 • Reg. No.: 13065487  
 Emulation 31 Emulation N Bar 5522  
 N Bar Emulation EXT Ankony 8F78 Lass 8F275  
 N Bar Primrose 2424 Emulation 31  
 Primrose N Bar 9962  
 Rito OT9 of 5P3 Rito 2100 Rito 2100 G D A R  
 MB OT9 Queen Ruth 3520 Pine Drive Rita 5P3 of 7T26  
 LB Queen Ruth 6203 Dakota Poundmaker 24  
 LB Queen Ruth JJ 4104

CARCASS
CAR WT
N/A
MARB
N/A
RIBEYE
N/A
FAT
N/A
%RP
N/A

This daughter of the Pathfinder Sire N Bar Emulation EXT was produced from a dam who combines a progeny birth ratio of 92 in combination with a progeny weaning ratio of 104 on six calves and a progeny yearling ratio of 103 on four head.

A maternal brother was a \$2,800 selection of Hal Kunze for his K Bar Ranch of Randolph, Kansas in the 1997 Mill Brae Sale. **Bred to calve October 22, 2000 to PLOWMAN 1627 OF MILL BRAE SAR. Exposed to MILL BRAE 6807 TRAV 3508 from January 20, 2000 to February 14, 2000.**